

Beverley & District Motor Club Limited
Maple Garage Beaver Rally
29/30th November 2003

Route Handout number 1

MTC1 @ 203350 to STC3

Pass through the following grid squares to STC3.

2035213521342234213421332132223222312331243124322532

Black spot

2232 NE½

Give Ways

Coloured road junctions 2, 6 and 7

Grass Triangles

Long way round at 2082535225

Long way round at 2252532025

Long way round at 2230034850

Route checks will be found in the following squares

2432

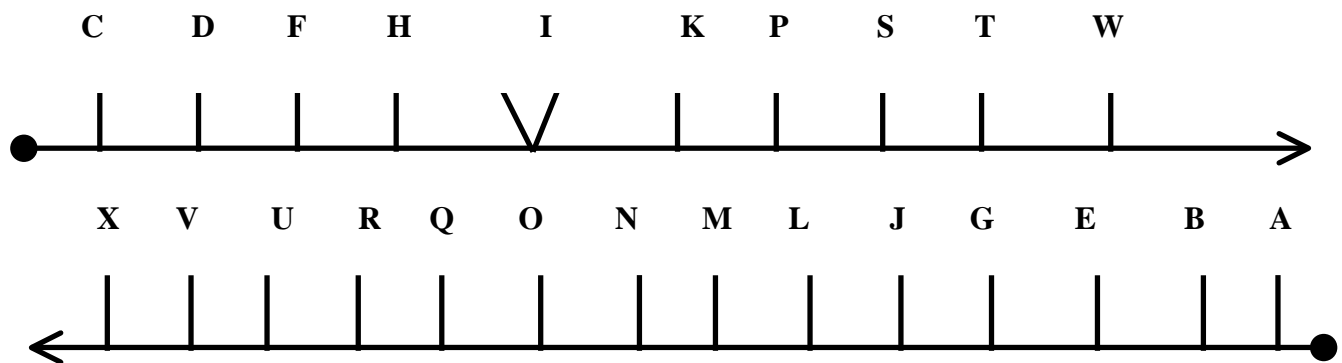
Rejoin point

NTC6 @ 2330038700 app SE

Route Handout number 2 – all roads

STC3 @ 2567532550 to NTC6

The following herringbone has been split up. Pass the bones in ascending alphabetical order. (Hint if you find it difficult, try drawing a normal herringbone)



Give Ways

Are located at bones I and N

Grass Triangles/Not as map features

Short way round at 2605032900

Long way round at 2617535425

Route checks will be found at the following locations

Between spot heights 13 and 12

Rejoin point

NTC6 @ 2330038700 app SE

Quiet between STC5 and NTC6

Beverley & District Motor Club Limited
Maple Garage Beaver Rally
29/30th November 2003

Route Handout number 3 – all roads

NTC6 at 2330038700 to RTC8

Pass through the following tulips in reverse alphabetical order

S 	F 	O Give way	D 	W
H Give Way	U 	G 	L 	N - use this tulip twice
J 	Y 	A 	P 	I
R 	M 	Q 	B 	X
V 	E 	C 	T 	K

Grass Triangles/Not as map features

Long way round at 2102537725

Route checks will be found in the following squares

1937 1737

Rejoin point

RTC8 at 1670040500 app S Quiet between IRTCS 7 AND RTC8

Beverley & District Motor Club Limited
Maple Garage Beaver Rally
29/30th November 2003

Route Handout number 4

RTC8 at 1670040500 to STC11

E N N E N W W W W N N N N

Give Ways

At coloured road junctions 1,2,6 and 9

Grass Triangles/Not as map features

Long way round at 1467544050

Long way round at 1495044700

Long way round at 1437546525

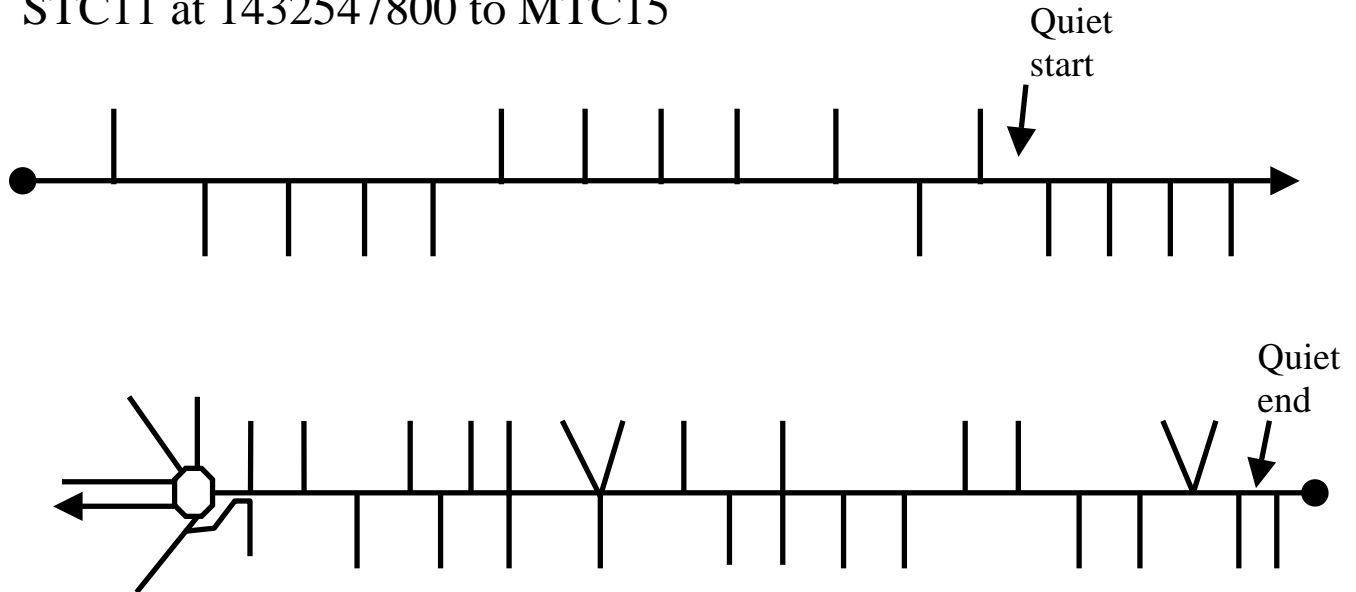
Rejoin point

Petrol is at 1205045350

MTC15 at 0100041000 app ESE

Route Handout number 5 – all roads

STC11 at 1432547800 to MTC15



STC14 will be found opposite blue holiday accommodation

Give Ways

Bones 7 12 19 27 33 and 37

Route checks will be found at the following locations

Between bones 9 and 10	Between bones 12 and 13	Between bones 18 and 19
Between bones 24 and 25	Between bones 30 and 31	In lay-by between bones 34 and 35

From STC14 proceed to petrol at 1205045350. (If you can make the second petrol, which is in 45 miles time, please do as the next one has opened up especially for the event.)

From petrol, proceed to noise check at 1200045200 and then via 1115043950 and 0220041200 to MTC 15 located at 0100041000.

Route Handout number 6

MTC15 at 0100041000 to STC16

Do not pass through any spot heights in order to drive through the middle of an electricity pylon

Black spots squares 9937 0138 9739 9841

Give Ways

Coloured junctions 2 and 10 and 12

Route checks will be found at the following locations

in and square 9838

Rejoin point

STC21 at 8975042650 approach WNW

Beverley & District Motor Club Limited
Maple Garage Beaver Rally
29/30th November 2003

Route Handout number 7 – all roads

STC16 at 9865038150 to RTC18

	1	2	3	4	5	6	7
A		dg				ew	
B		87					
C		111					
D		ol	104 			113	

Pass through the following in order

C3 B6 D1 B2 A5 A5 D6 A1 C4 A4 D2 C1 D4 C7 A3 A7
B1 C6 D7 D3 D5 B4 C3 C2 A2 A6 C5 B7 B3 B5

Give Ways

B7

↑
Quiet
start

↑
Quiet
end

Grass Triangles/Not as map features

Long way round at D3

Route checks

Between B2 and A5 and Between C3 and C2

Rejoin point

RTC23 at 8940038875 app NE

Beverley & District Motor Club Limited
Maple Garage Beaver Rally
29/30th November 2003

Route Handout number 8

RTC18 at 9600042800 to STC21

Pass through the following map references in order

1	9712543250 app WSW	5	9330045000 app SSW
2	9702543900 app SSE	6	9355046925 app SSW
3	9407544000 app ESE	7	9177545650 app NE
4	9320044450 app SSW	8	8917543200 app NE

Give Ways

3rd coloured junction

Grass Triangles/Not as map features

Long way round at 9335047250 give way

Long way round at 9010042600 app NW

Rejoin point

RTC23 at 8940038875 app NE

Quiet between STC20 and STC21. This section contains a 30mph area

Beverley & District Motor Club Limited
Maple Garage Beaver Rally
29/30th November 2003

Route Handout number 9 STC21 at 8975042650 to RTC23

Pass through 2 red diamonds then 12 green dots then 4 red diamonds
Alternatively you can follow the route as described below.

70 metres 45 left, into 80 right, into 45 left, into 30 right, into 30 left.

STOP at SGW

Turn right and immediately left around grass triangle. (Letter board) and then turn right.

30 metres over brow

150 metres 45 right

70 metres long sweeping left, into 45 left over brow

50 metres 30 right

200 metres long sweeping right

100 metres 30 left

300 metres over brow

300 metres to slight left, into slight right

500 metres junction turn right just before railway bridge, into 30 left, into long 45 right

100 metres long 90 left, into long 70 right

500 metres to letter board

500 metres to 45 right

400 metres to 45 left

500 metres to 45 left and immediate STOP!! at crossroads (Main road)

Straight across and slight left

100 metres to long sweeping left into 30 right

300 metres 30 left

250 metres 30 right into slight left

100 metres long 90 right (CARE!!)

100 metres to letter board

1000 metres to bumpy but straight past farm

300 metres to letter board

300 metres to 30 left

400 metres to 30 right

500 metres to STOP. Turn right Quiet.

100 metres turn left

200 metres 45 left into 30 right

200 metres 30 left into 30 right

OK to RTC23

Give Ways

3rd Coloured road junction

Route checks will be found at the following locations

63

100 metres after a bridleway

100 metres after a power transmission line

Rejoin point

MTC26 at 8530044700 app SW

Petrol is at 8470043500

Quiet from IRTCS22 to RTC23.

Route Handout number 10

RTC23 at 8940038800 to MTC26

Cross over the course of a Roman Road four times and pass through the following spot heights; Twenty four, eleven, eight and eleven. STC 25 will be found before a junction that has four roads and a small white circle in the centre.

Proceed to petrol at 8470043500 before proceeding to MTC26, which is located at 8530044700 approaching from the southwest.

Give Ways

Coloured junctions 1, 3 4 and 8

Grass Triangles/Not as map features

Go into lay-by as you cross grid line 40 for the third time

Route checks will be found in the following squares

8739 and at spot height 11 number two

Quiet between STC25 and MTC26

Route Handout number 11 - all roads

MTC26 at 8530044700 to STC29

Miss the following spot heights and squares for this section **only**.

Squares 8149 8549 8649 8350 8743 8646 E half only

Spot heights 155 88 115 165 42 36 109 24 112 116 138

Black spot

8255050000

Give Ways

Coloured junctions 3, 4, 7, 10 and 11

Grass Triangles/Not as map features

Long way round at Bratt Wood

Long way round at 8220049550

Route checks will be found in the following squares

8645

Rejoin point

RTC31 at 8765050550 app NNW

Quiet in village before Bratt Wood

Route Handout number 12

STC29 at 8265051725 to RTC31

Do **NOT** use handbrake at 1st coloured junction

Long Long Lat Long Lat Lat Long Lat Lat Long Long Lat
Long Lat Lat Long Lat Long Long

Give Ways

At coloured junctions 3, 4, 6 and 12

Grass Triangles/Not as map features

Long way round at 8235051700

Long way round at 2nd coloured junction

Long way round triangle at the junction before RTC31

Route checks will be found in the following squares

8654

8552

Rejoin point

NTC33 at 9420048400 app NNW

Other information

You will pass through one spot height over 100 that was a black spot on the previous section. Quiet from IRTC30 to RTC31

Beverley & District Motor Club Limited
Maple Garage Beaver Rally
29/30th November 2003

Route Handout number 13 - CRO

RTC31 at 8765050550 to NTC33

77 123 108 82 76

Give Ways

Coloured junctions 3 and 4 after leaving the control

Rejoin point

NTC33 at 9420048400 app NNW

Quiet for STC32 to NTC33

Beverley & District Motor Club Limited
Maple Garage Beaver Rally
29/30th November 2003

Route Handout number 14

NTC33 at 9420048400 to STC34

VHVVVVHHHVHHH

Black square 9747 N half

Give Ways

Coloured junctions 2 and 11

Grass Triangles/Not as map features

Long way round at 9335047450

Route checks will be found in the following squares

9746

9845

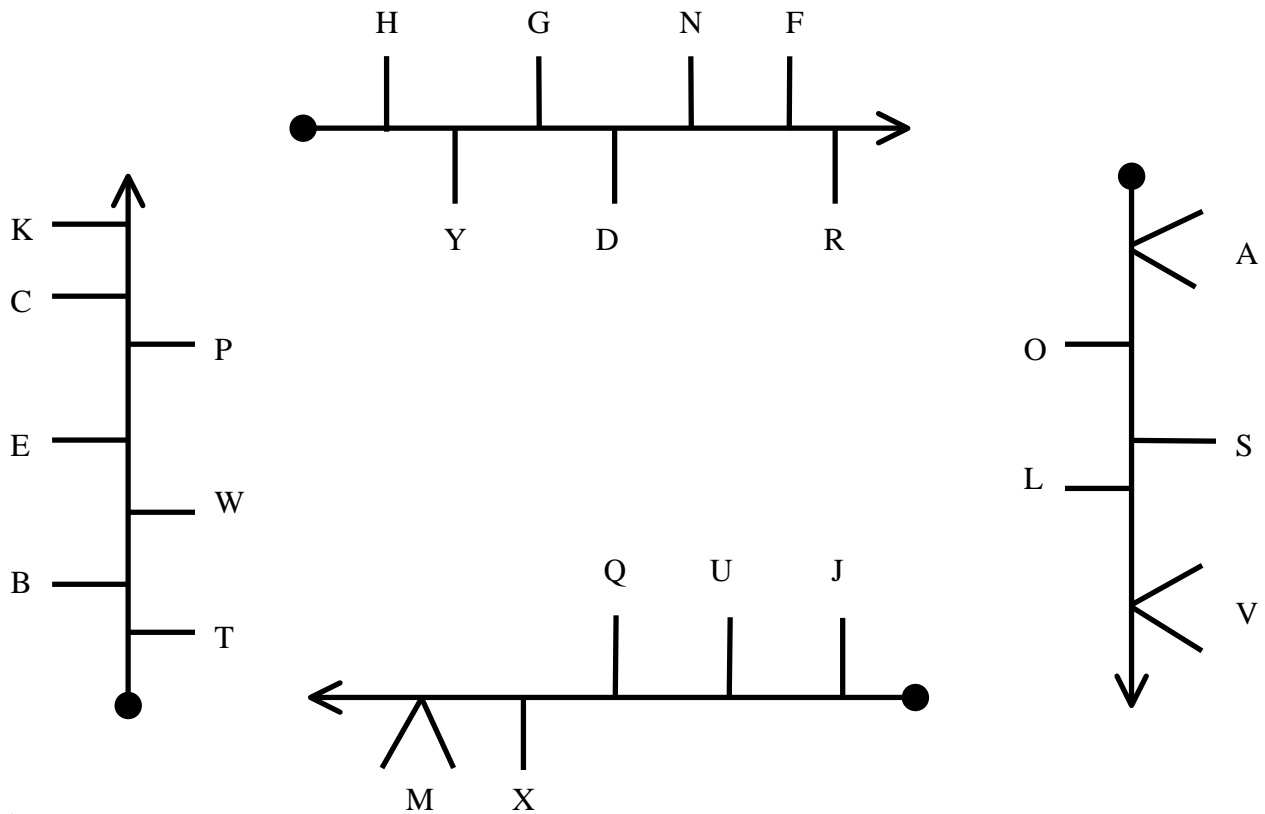
Rejoin point

MTC37 at 9970037100 app WNW

Route Handout number 15 – all roads

STC34 at 9830046900 to STC36

Pass in descending alphabetical order



Give Ways

Bones lettered V and A

Grass Triangles/Not as map features

Long way round at S

Long way round at M

Route checks will be found in the following squares

9852

Beverley & District Motor Club Limited
Maple Garage Beaver Rally
29/30th November 2003

Route Handout number 16

STC36 at 0107753225 to MTC37 at 9970037100

Congratulations on reaching the last competitive control in the 2003 Maple Garage Beaver Rally.

Turn right at the next junction and proceed to the finish via the following map references.

0217541200

0020041500

0030039675

9950038475 depart south

Ignore black square 9937 previously used on the event. You will also use a stretch of road used previously.

Quiet in Walkington

The finish is at the Dog and Duck public house at 9970037100

Please enjoy your breakfasts and await the results to be published. We hope to have the first two time cards available for you to look at.

You can take your time on arrival at the finish and proceed straight to breakfast.